



A new Norwegian platform for AI and IoT

Bjørn Taale Sandberg, Research Director Telenor ASA

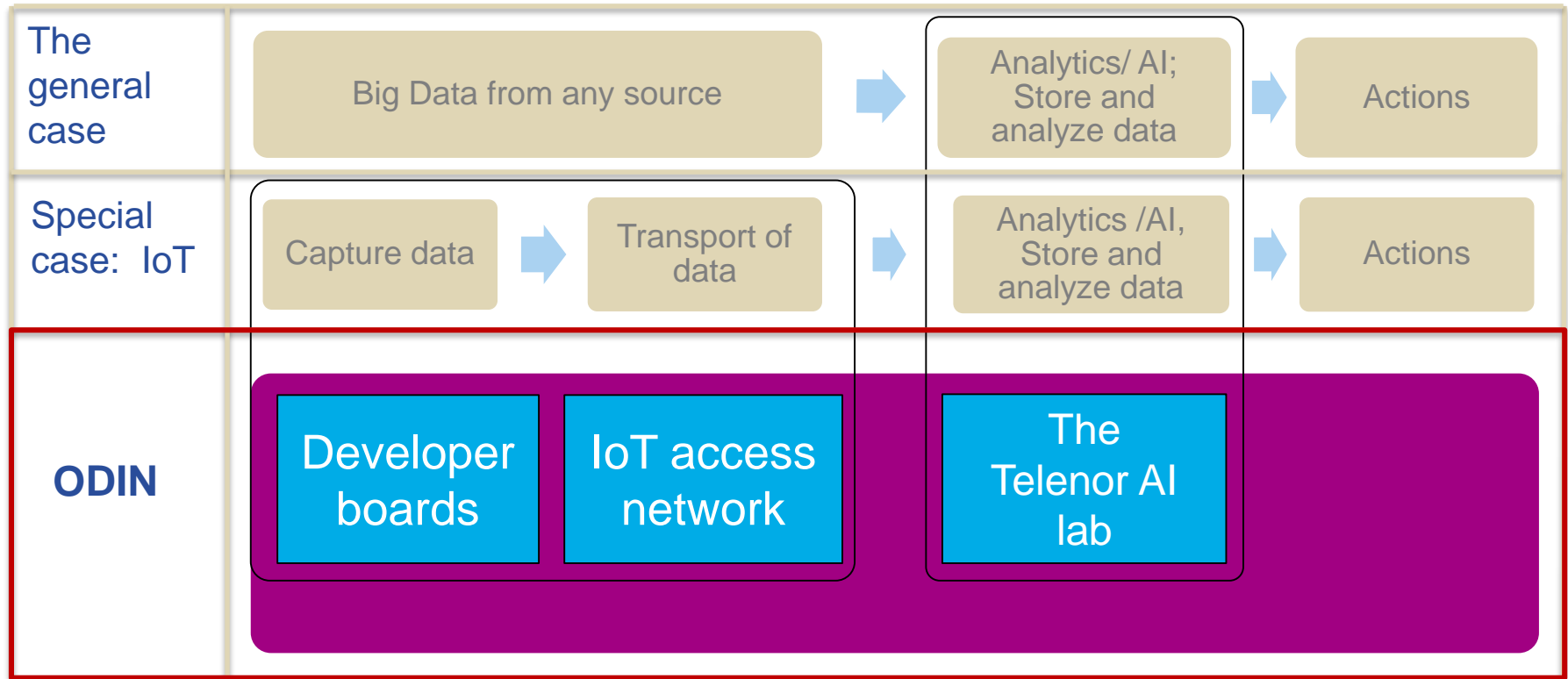


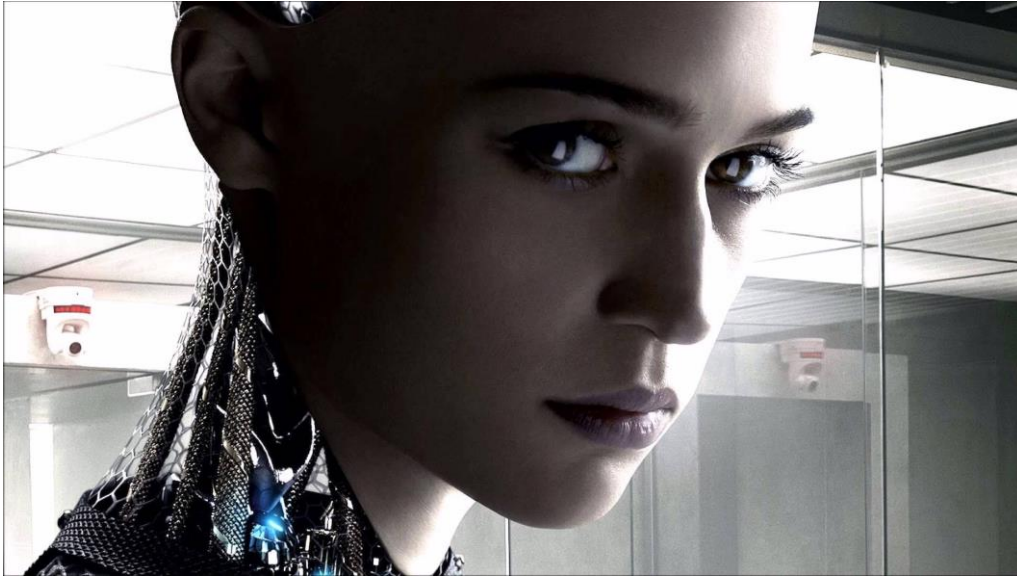


«An initiative by
Telenor that can make
a real difference»



Our proposal for Digitizing Norway is about Creating value from data and taking a lead in IoT





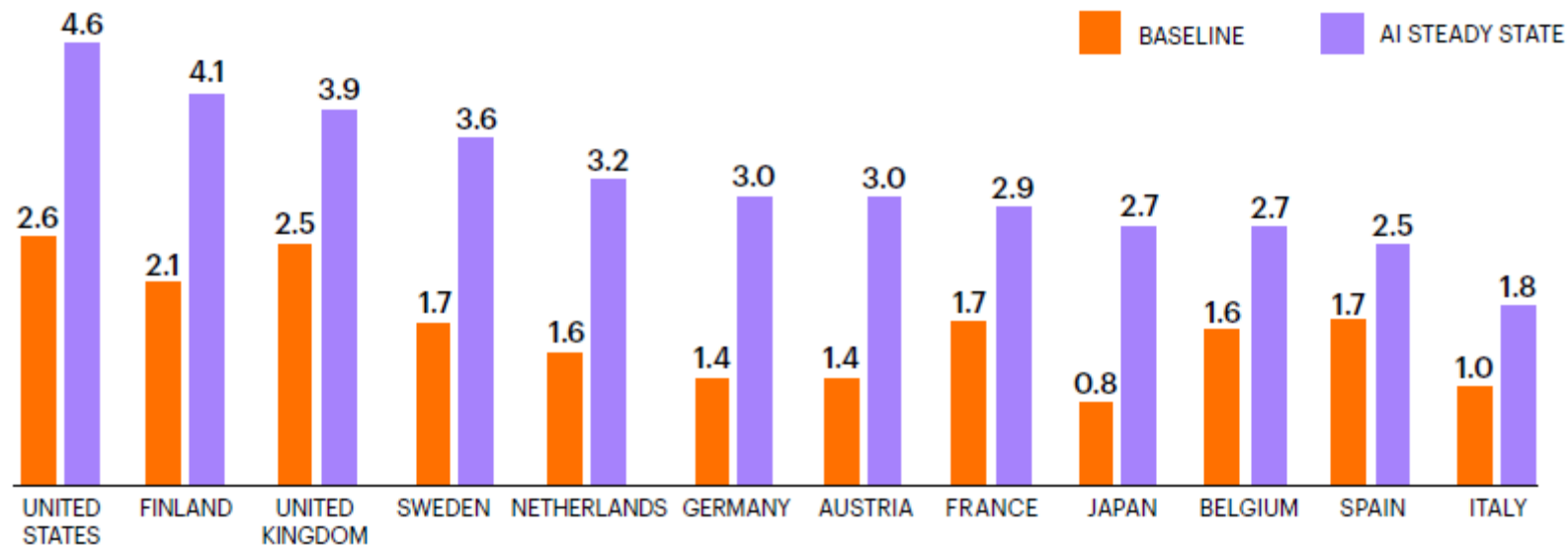
Ex machina

AI may be the 21st
Centurys most
important technolgy.



NB: ▲ indicates the change in that factor.

Source: Accenture analysis



Real gross value added (GVA) (% growth)

Source: Accenture and Frontier Economics

There is a catch however...

Oversetter

engelsk norsk spansk Gjenkjenn språk ▼



Er Abelia en innovativ arbeidsgiverforening? x



norsk engelsk spansk ▼

Oversett

No!

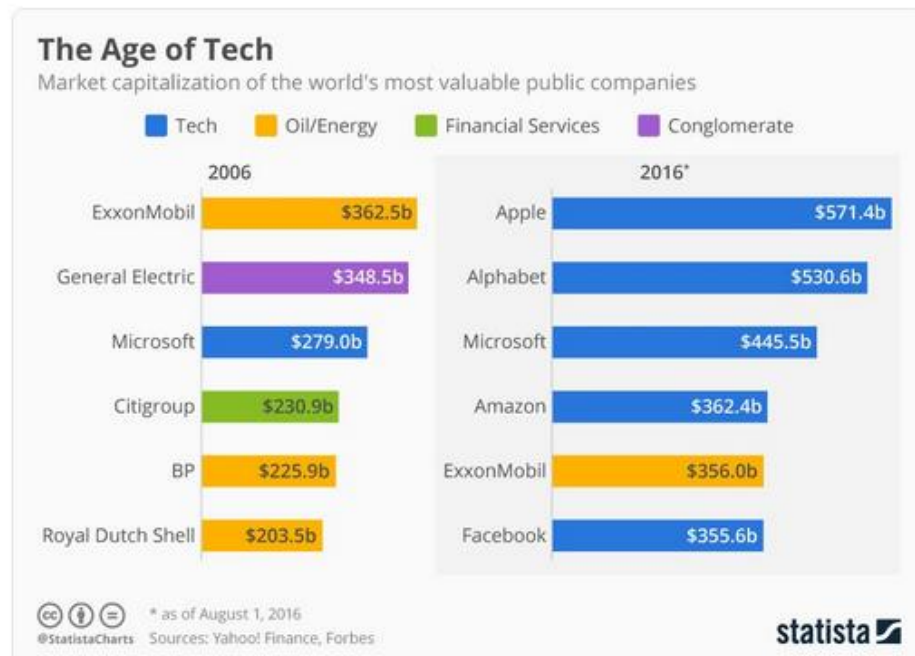


Foreslå en endring

Oversetter-brukerfellesskapet vårt har sjekket denne oversettelsen. Du kan også hjelpe oss med å forbedre kvaliteten.

[Kom i gang](#)[Lukk](#)

Farewell oil, hello tech: the world's 5 most valuable companies in 2006 and 2016 wef.ch/2dkOiAR

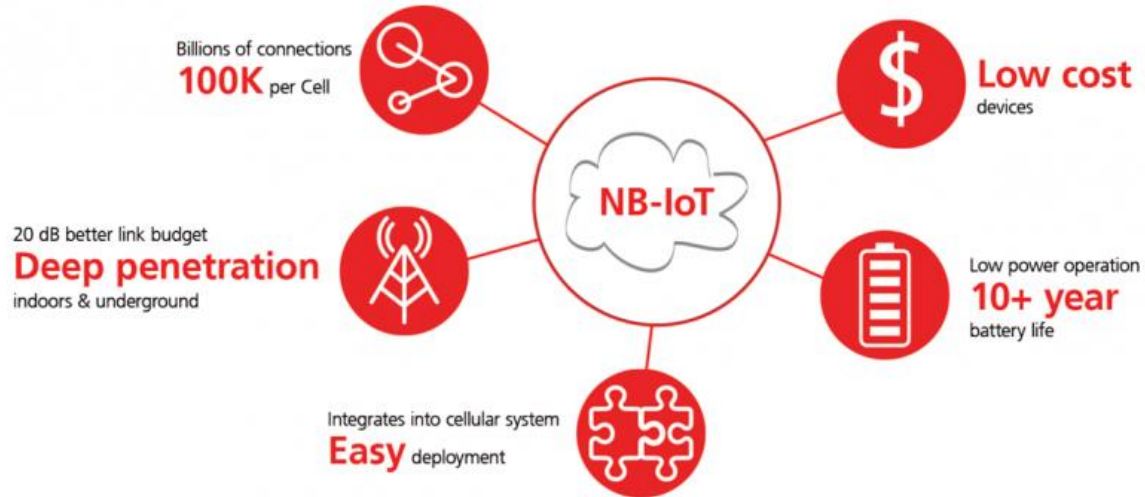


How do we create broad growth from AI ?

Platform companies benefiting from strong AI network effects



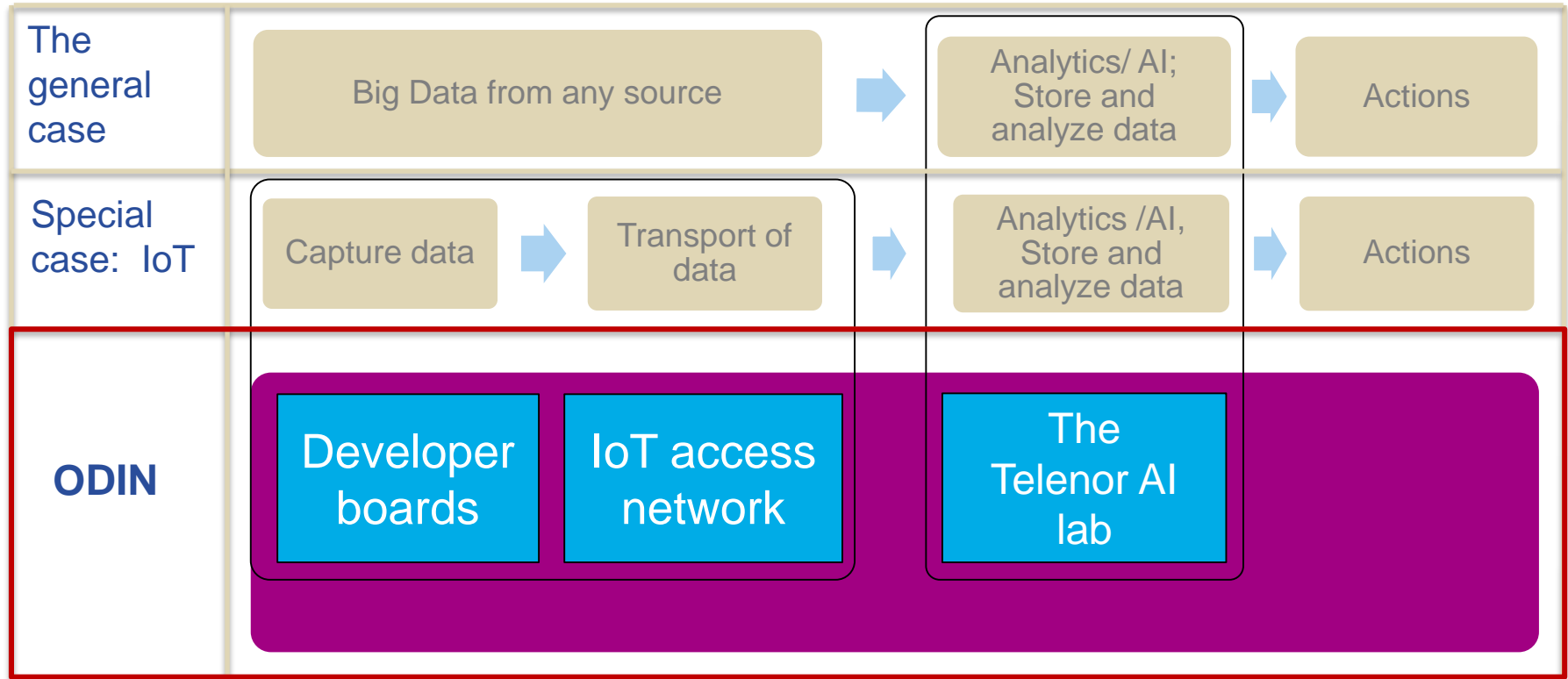
We need to
address our
skill base in
STEM and AI
– Research
and Education

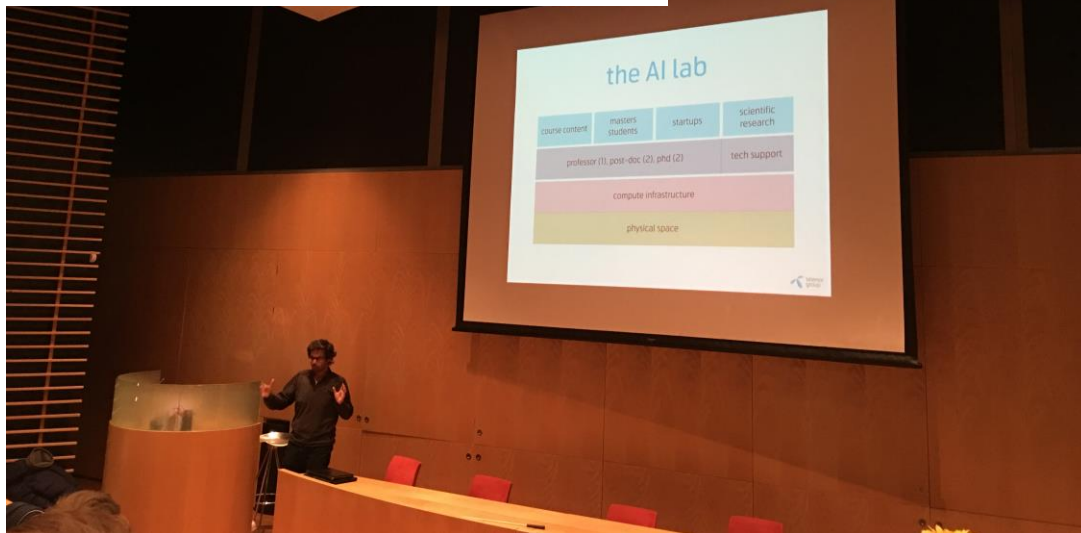


Source: ublox

We need to stimulate company building in 'virgin' areas, where the data is just starting to flow.

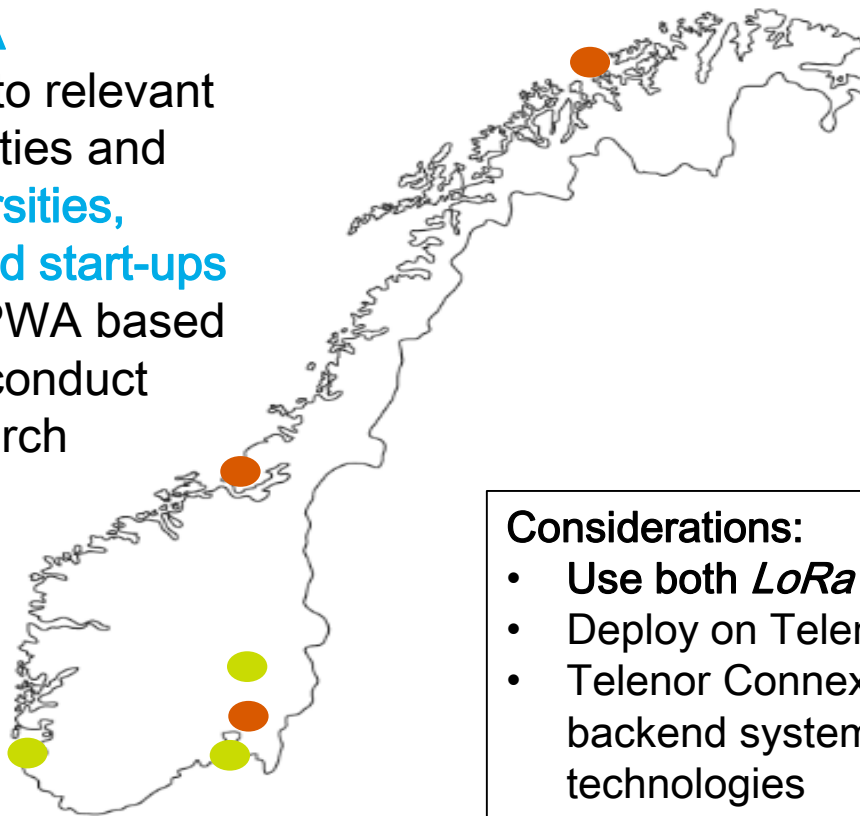
Our proposal for Digitizing Norway is about Creating value from data and taking a lead in IoT





ODIN IoT Innovation Network

provide **LPWA infrastructure** to relevant universities/ cities and engage **universities, developers and start-ups to innovate** LPWA based services and conduct relevant research



Phase 1:

- Tromsø
- Trondheim
- Oslo

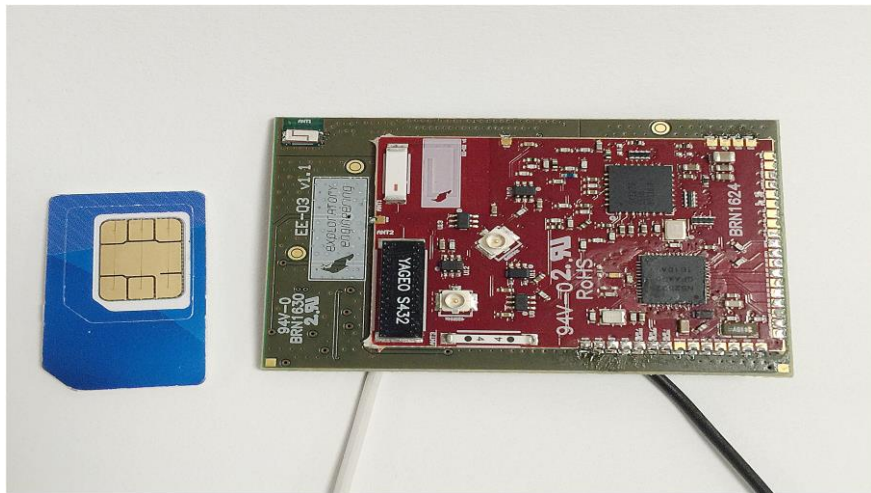
Phase 2, e.g.:

- Horten
- Stavanger
- Gjøvik

Considerations:

- Use both *LoRaWAN* and *NB-IoT*
- Deploy on Telenor masts & towers
- Telenor Connexion *Cloud Connect* as backend system for both access technologies

Telenor produced IoT modules



- Distribute 1000 modules
 - Firmware included (open source)
 - ARM Cortex M4
 - Lots of I/O pins
 - BLE (for wireless sensors)
 - NFC (for provisioning)
 - HW design is open source

Thank You

